

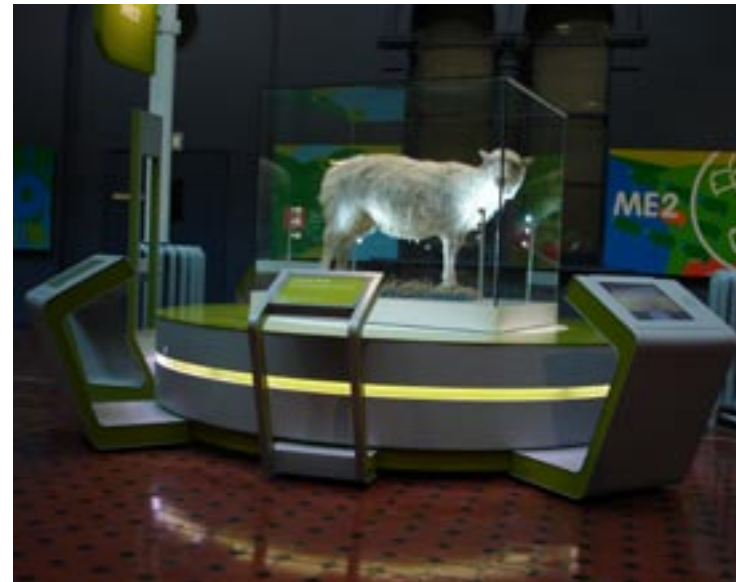
## Overview

Connect is an interactive science and technology gallery at the National Museum of Scotland.

The gallery includes robots, F1 cars, rockets and Dolly the sheep.

Newangle were commissioned to produce 4 interactives based on Genetic Modification.

The interactives explain the definition of a clone, introduces the major debates surrounding cloning and genetic modification and allows the visitor to vote on several issues regarding the future of the science.



# National Museum of Scotland

Connect Gallery

## Project details

### Client

National Museum of Scotland

### Designer

Portland Design

### Services

Concept design, scriptwriting, prototyping, graphic design, programming, project management

### Overview

4 touchscreen interactives

